

Nikkei Stock League 2024 @ LaGuardia

Wednesday, March 20, 2024
10:00am-2:00pm @ LaGuardia CC (Room B-227)

A group of Japanese high school students who won a national virtual stock market competition (<https://manabow.com/sl/result/24/>) are visiting LaGuardia Community College on Wednesday, March 20, 2024. They are visiting LaGuardia to learn about college life in New York and what college students in New York think about investment (e.g., Sustainable Investing). The Japanese group consists of about 3 high school students and 2 chaperons. They will arrive at LaGuardia at 10:00am, followed by lunch, campus tour, and intercultural activities with LaGuardia students until 2:00pm.

Agenda

10:00am-10:10pm	The Nikkei League group arrives at LaGuardia & Welcome (Tomonori Nagano & Robin Kietlinski)
10:10am-10:25pm	Self-introduction with business cards
10:25pm-10:35pm	Introduction to the topic of the day: Sustainable investment
10:35pm-11:45am	Campus tour & Scavenger Hunt
11:45am-12:30pm	Lunch (@ M-building cafeteria)
12:30pm-1:45pm	Creating e-tegami
1:45pm-2:00pm	Closing & Photo opp

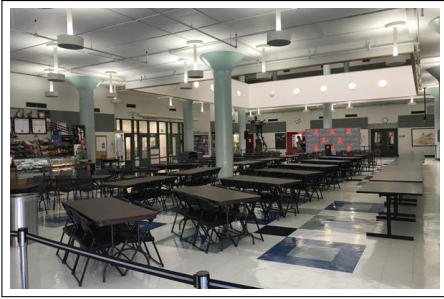
Rules for Scavenger Hunting

- (1) Safety first. No running or pushing each other.
- (2) All prizes are in jute bags. One prize is hidden at each location.
- (3) When you take a prize, leave a note saying 「一足遅かったね」 / "You were a minute too late!" so that other groups know the prize has been taken.
- (4) Return to room B-227 by 11:45am.

The campus map of LaGuardia Community College



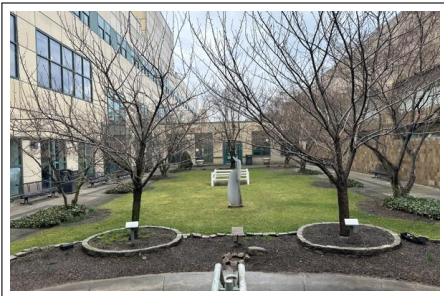
Clues for Scavenger Hunting



図書館の前の広いスペースです。テーブルと椅子が並び、天井からはモダンな照明が吊り下がっています。壁には情報のポスターが掲示されており、コーヒーや軽食が売っているカウンターが見えます。学生の交流と食事の場として利用されています。



ラガーディアの“LPAC”という劇場で、1,000人近くの人が入場できるスペースがあります。劇場の外の廊下は広くて明るく、色とりどりの床の模様が特徴的です。壁には大きなアートワークがあります。



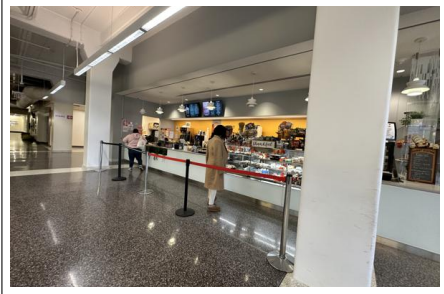
建物に囲まれた小さな公園です。緑の芝生があり、葉が落ちた木が何本か植えてあります。桜の木もあります。ベンチが置いてあって、休憩できる静かな場所です。



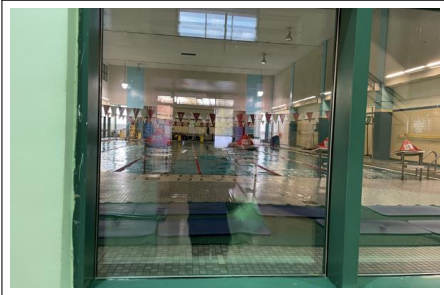
ラガーディアの図書館の2階で、学生たちが勉強や読書に集中している静かな空間です。快適なソファと木製のテーブルが配置され、窓からは自然光が差し込んでいます。ここは、“Quiet Zone”と言って、話をしてはいけない勉強スペースです。



ラガーディアの食堂の一つです。木目調の床とモダンな家具が特徴的で、明るい窓からは日光が差し込みます。壁には“CHALLENGE”と大きく書かれ、学生たちの活気に満ちた学びの場を象徴しています。



ラガーディアの売店の一つで、コーヒー、スナックなどを販売しています。Cビルディングという建物の一階にあり、明るい照明の下、清潔感ある白い壁と大理石模様の床が特徴的です。1階にあり、入り口から近いので、いつも学生たちが並んでいる人気のある売店です



ラガーディアのプールが見えます。プールサイドには、大きな勉強スペースがあり、学生がガラス越しに水泳を眺めることができる設計になっています。



学生や先生のためのパーキングスペースです。多くの学生は、電車やバスで通学しますが、遠くから通学する学生や職員は車で通学する人もいます。駐車場からは、ラガーディアのビルの上に飾られている“LaGuardia Community College”という標識が大きく見えます。



ラガーディアの前には、コンビニのSeven Elevenがあります。雰囲気や商品は、日本のセブンイレブンとは全然違います。カラフルなドーナツが多くあったり、超巨大なジュースなどを自分で入れるサービスがあったりします。また、自分でホットドックを作るサービスが、レジの横に大きく場所をとっていたりして、ちょっと同じブランド店とは信じ難いです。

一足遅かったね
You were a minute too
late!

一足遅かったね
You were a minute too
late!

一足遅かったね
You were a minute too
late!

一足遅かったね
You were a minute too
late!

一足遅かったね
You were a minute too
late!

一足遅かったね
You were a minute too
late!

一足遅かったね
You were a minute too
late!

一足遅かったね
You were a minute too
late!

This page is intentionally left blank.

How to do e-tegami (絵手紙)

- **What is e-tegami (絵手紙)?**
Etegami is a Japanese folk art that consists of simple hand-painted drawings accompanied by a few apt words. These are almost always done on postcards for quick and easy mailing. The basic concept has been around for a long time, as the tradition of handmade New Year's cards testifies. However, the present-day surge in etegami's popularity began after the media took up the work of artist Koike Kunio in the late 1970s.
- A few examples of e-tegami by students from Jobu University (上武大学) when they visited LaGuardia to host an e-tegami workshop in 2016.



How to write e-tegami

- (5) **Find Your Inspiration:** Decide on the theme of your e-tegami. It could be a scene from nature, a seasonal event, a plant, an animal, or anything that inspires you. Remember, the goal is to promote sustainability practices among your family and friends.
- (6) **Sketch Your Drawing:** Lightly sketch your chosen subject on the paper using a pencil. Don't worry about making it perfect. The charm of e-tegami comes from its simplicity and personal touch. Keep your drawing simple so that it complements your message rather than overshadowing it.
- (7) **Add Ink:** Once you're happy with your sketch, carefully go over the lines with a fine black ink pen or calligraphy pen. This will define your drawing and prepare it for adding color. Allow the ink to dry completely before moving on to the next step.
- (8) **Add Color:** Using watercolors or colored pencils, begin to add color to your drawing. If you are using watercolors, be mindful of the amount of water on your brush to avoid warping the paper. Colors can overlap and blend to create depth and interest in your drawing. Let your creativity flow, but also consider the overall harmony of your artwork.
- (9) **Write Your Message:** Once your artwork is dry, it's time to add your personal message. This can be done at the side of the drawing or at the back of the paper, depending on how you want your 絵手紙 to be displayed. Use a pen that complements your artwork, and write a message from the heart. It could be a poem, a simple greeting, or a few words of wisdom.