



Liberal Arts Japanese Option Welcome Orientation (Spring 2024)

Tomonori Nagano <tnagano@lagcc.cuny.edu>

Education and Language Acquisition Dept.
LaGuardia Community College

February 24, 2024

Self introduction (in Japanese style) I

- Make five business cards (write down your name, e-mail (optional), phone (optional), and interests).



Self introduction (in Japanese style) II

- Watch JapanTravelTV (<https://youtu.be/of8UgykfUbw?t=21>) about how to exchange business cards in Japan



Self introduction (in Japanese style) III

Self-introduction in the Japanese business style

- Meet with five new people that you have never spoken with.
- Exchange your business cards (properly!)
- Comment on at least one thing about your partner (e.g., "Oh, you like fine art. Me too" etc).

Welcome to the Japanese Option I

- Welcome to the Japanese Option! We are pleased to see you and are looking forward to working with you in your academic endeavor at LaGuardia Community College.



Welcome to the Japanese Option II

- This information sheet has a lot of useful information for new students (<https://bit.ly/LG-JPONew>)



Lafayette College
Japanese Option



Copyright © 2019 by Lafayette College



Acquire Japanese Option
Lafayette's Asian Studies Option (ASO) offers an opportunity to learn the Japanese language and other related subjects such as Japanese Literature, Asian Art, East Asian History, Religion, and Social Psychology in Asia in order to acquire an Associate's degree in Japanese. The curriculum is designed to prepare students for transfer to four-year programs in East Asian Studies and/or Japan Studies. Upon graduation, the Japanese Option at Lafayette Community College can transfer to East Asian Studies (BA Degree) Program at Queens College or the Japanese Language and Culture Alliance College to pursue a Bachelor's degree in Japanese. There are two graduates apply for transfer to prestigious colleges and universities in East Asian Studies including MIT, Temple University Japan Campus, and Kansai Gakuin University.

One of the Japanese Option is to include studying interests and prior knowledge in Japan for professional careers. We will deal with Japanese language/culture as a serious academic subject and study materials beyond your existing interest in Japanese pop culture and anime. There will be an opportunity in the Japanese Option should any existing course of the following courses to identify if the program fits your interests and future career plans.

Lafayette College
Copyright © 2019 by Lafayette College

Who can "Opt in" for the Japan Studies Option?
Students who are currently enrolled in the Japanese Language I (JL1) or Japanese II (JL2) are eligible to opt in to the Japanese Option.


Major Language I & Japanese Plus for NISE
Students who are currently enrolled in the Japanese Language I (JL1) or Japanese II (JL2) are eligible to opt in to the Japanese Option.

History of Japan
Students who are currently enrolled in the Japanese Language I (JL1) or Japanese II (JL2) are eligible to opt in to the Japanese Option.


The Role of Modern Japan by Mark Rutten
Students who are currently enrolled in the Japanese Language I (JL1) or Japanese II (JL2) are eligible to opt in to the Japanese Option.

Modern Japan: A Short History
Students who are currently enrolled in the Japanese Language I (JL1) or Japanese II (JL2) are eligible to opt in to the Japanese Option.

More Information
Use our fact sheet information about the Japanese Option at the following link:
<https://bit.ly/LG-JPONew>



Lafayette College
Japanese Option



Copyright © 2019 by Lafayette College

ACADEMIC CURRICULUM
The academic curriculum is subject to change every academic year. Please refer to the College Catalog (<https://catalog.lafayette.edu/>) for the most current information on the Japanese Option. The sample curriculum with suggested course sequence is for informational purposes only. It is not meant to be used as a checklist for students. It is only a guide to help you plan your course of study. It is not meant to be used as a checklist for students. It is only a guide to help you plan your course of study.

HOW TO CHANGE YOUR MAJOR
Students can change their major at the Registrar's Office (C-101) within the first three or four weeks of the semester. If you apply for a new major after the change of major deadline, the change will be effective only in the following semester. It is highly recommended

to meet with the program director (see below) before submitting your Change of Major Form.

CONTACT
The program director of the Japanese Option is Prof. Margaret M. Kelly. She is usually available in office during the day and can be reached by email at margaret.kelly@lafayette.edu. Feel free to contact Prof. Kelly if you have questions about the Japanese Option or the Japan Study Program.

Course	Prerequisites
Japanese Language I (JL1)	
Japanese Language II (JL2)	JL1
Japanese Language III (JL3)	JL2
Japanese Language IV (JL4)	JL3
Japanese Language V (JL5)	JL4
Japanese Language VI (JL6)	JL5
Japanese Language VII (JL7)	JL6
Japanese Language VIII (JL8)	JL7
Japanese Language IX (JL9)	JL8
Japanese Language X (JL10)	JL9
Japanese Language XI (JL11)	JL10
Japanese Language XII (JL12)	JL11
Japanese Language XIII (JL13)	JL12
Japanese Language XIV (JL14)	JL13
Japanese Language XV (JL15)	JL14
Japanese Language XVI (JL16)	JL15
Japanese Language XVII (JL17)	JL16
Japanese Language XVIII (JL18)	JL17
Japanese Language XIX (JL19)	JL18
Japanese Language XX (JL20)	JL19
Japanese Language XXI (JL21)	JL20
Japanese Language XXII (JL22)	JL21
Japanese Language XXIII (JL23)	JL22
Japanese Language XXIV (JL24)	JL23
Japanese Language XXV (JL25)	JL24
Japanese Language XXVI (JL26)	JL25
Japanese Language XXVII (JL27)	JL26
Japanese Language XXVIII (JL28)	JL27
Japanese Language XXIX (JL29)	JL28
Japanese Language XXX (JL30)	JL29
Japanese Language XXXI (JL31)	JL30
Japanese Language XXXII (JL32)	JL31
Japanese Language XXXIII (JL33)	JL32
Japanese Language XXXIV (JL34)	JL33
Japanese Language XXXV (JL35)	JL34
Japanese Language XXXVI (JL36)	JL35
Japanese Language XXXVII (JL37)	JL36
Japanese Language XXXVIII (JL38)	JL37
Japanese Language XXXIX (JL39)	JL38
Japanese Language XL (JL40)	JL39
Japanese Language XLI (JL41)	JL40
Japanese Language XLII (JL42)	JL41
Japanese Language XLIII (JL43)	JL42
Japanese Language XLIV (JL44)	JL43
Japanese Language XLV (JL45)	JL44
Japanese Language XLVI (JL46)	JL45
Japanese Language XLVII (JL47)	JL46
Japanese Language XLVIII (JL48)	JL47
Japanese Language XLIX (JL49)	JL48
Japanese Language L (JL50)	JL49

Course	Prerequisites
Japanese Language I (JL1)	
Japanese Language II (JL2)	JL1
Japanese Language III (JL3)	JL2
Japanese Language IV (JL4)	JL3
Japanese Language V (JL5)	JL4
Japanese Language VI (JL6)	JL5
Japanese Language VII (JL7)	JL6
Japanese Language VIII (JL8)	JL7
Japanese Language IX (JL9)	JL8
Japanese Language X (JL10)	JL9
Japanese Language XI (JL11)	JL10
Japanese Language XII (JL12)	JL11
Japanese Language XIII (JL13)	JL12
Japanese Language XIV (JL14)	JL13
Japanese Language XV (JL15)	JL14
Japanese Language XVI (JL16)	JL15
Japanese Language XVII (JL17)	JL16
Japanese Language XVIII (JL18)	JL17
Japanese Language XIX (JL19)	JL18
Japanese Language XX (JL20)	JL19
Japanese Language XXI (JL21)	JL20
Japanese Language XXII (JL22)	JL21
Japanese Language XXIII (JL23)	JL22
Japanese Language XXIV (JL24)	JL23
Japanese Language XXV (JL25)	JL24
Japanese Language XXVI (JL26)	JL25
Japanese Language XXVII (JL27)	JL26
Japanese Language XXVIII (JL28)	JL27
Japanese Language XXIX (JL29)	JL28
Japanese Language XXX (JL30)	JL29
Japanese Language XXXI (JL31)	JL30
Japanese Language XXXII (JL32)	JL31
Japanese Language XXXIII (JL33)	JL32
Japanese Language XXXIV (JL34)	JL33
Japanese Language XXXV (JL35)	JL34
Japanese Language XXXVI (JL36)	JL35
Japanese Language XXXVII (JL37)	JL36
Japanese Language XXXVIII (JL38)	JL37
Japanese Language XXXIX (JL39)	JL38
Japanese Language XL (JL40)	JL39
Japanese Language XLI (JL41)	JL40
Japanese Language XLII (JL42)	JL41
Japanese Language XLIII (JL43)	JL42
Japanese Language XLIV (JL44)	JL43
Japanese Language XLV (JL45)	JL44
Japanese Language XLVI (JL46)	JL45
Japanese Language XLVII (JL47)	JL46
Japanese Language XLVIII (JL48)	JL47
Japanese Language XLIX (JL49)	JL48
Japanese Language L (JL50)	JL49

Outline of this Orientation Presentation I

Quick Facts about the Liberal Arts Japanese Option

- **Faculty**

- Three full-time faculty with specialization in linguistics, history, and psychology. All full-timers hold doctoral degrees in their specialities.
- Four part-time faculty with specialization in the Japanese language

- **Curriculum**

- Japanese language, Japanese literature, Asian art, East Asian history, religions and social psychology in Asia

- **Transfer**

- CUNY: Queens (East Asian Studies), Hunter (Japanese Language & Culture), Baruch and CCNY.
- Private institutions: Temple University (Japan Campus)

- **Goal**

- To foster students' interest in Japanese culture (such as anime, manga, games, and other pop culture) into professional skill sets for future employment.

Japanese Option: Faculty (& Alumni) I



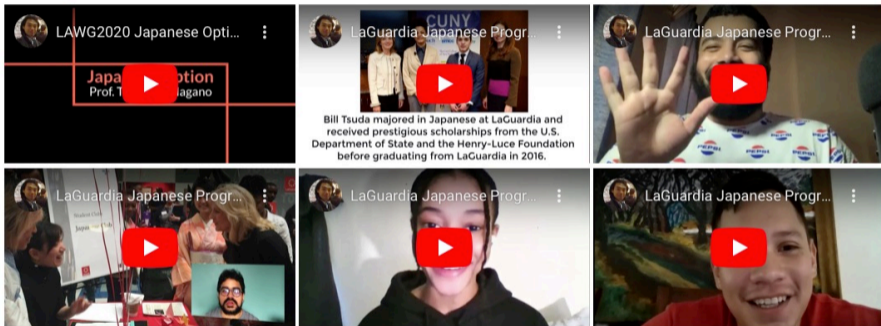
Japanese Option: Faculty (& Alumni) II

Japanese Option Faculty and Tutors

- Abdallah Alsallal, Adjunct Lecture (Japanese & Arabic languages)
- Eunji Kim, Adjunct Lecturer (Japanese & Korean languages)
- George Tsouris, Adjunct Lecturer (Japanese Literature & Philosophy)
- Kyoko Toyama, Ph.D., Professor (Japanese language & Psychology)
- Robin Kietlinski, Ph.D., Professor (Japanese history)
- Shiyo Kaku Kuo-Flynn, Adjunct Lecturer (Japanese & Chinese languages)
- Tomonori Nagano, Ph.D., Professor (Japanese Linguistics)
- Yukari Izumiyama, Japanese Tutor
- Rina Nagaya, Japanese Tutor
- Adriana Allen, Japanese Tutor
- Tereece Goodman, Japanese Tutor

Japanese Option: Faculty (& Alumni) III

- Alumni voices



<https://t-nagano.com/projects/JapaneseProgram/>

Japanese Option: Curriculum I

Things to Know about the Japanese Option Curriculum

- The curriculum of the Japanese Option
- DegreeMap (<https://www.laguardia.edu/degreemaps/>)
- DegreeAudit (<http://degreeworks.cuny.edu/>)



Japanese Option: Curriculum II

- DegreeMap (<https://www.laguardia.edu/degremaps/>)


Liberal Arts: Japanese Option

Associate of Arts | Degree Map

Follow this map to graduate in two years, though other paths are possible. Contact an advisor through My LaGuardia for additional support, and see [degrees](#) for more information.

	Course	Category	Priority	Credits	Session
SEMESTER 1	LF101 First Year Seminar for Liberal Arts	PC	x	3 (1/4)	1
	ENG101 English Composition I	BC	x	3 (1/4)	1
	MAT107, 115 or 120 Mathematics Required Core Course Option	BC	x	3 (1/4)	1
	ELJ101 Elementary Japanese I	PC	x	3 (1/4)	1
	Humanities Core Course Option (see back)	PC		3	1
SEMESTER 2	ENG102 English Composition II	BC	x	3	1
	SC1, SOC, OR SC2 Topics in Biology, Chemistry or Physics	PC	x	3	1
	ELJ102 Elementary Japanese II	PC	x	3 (1/4)	1
	Social Science Cluster Option (see back)	PC		3	1
	Flexible Core Course Option	PC		3	1
SEMESTER 3	Course	Category	Priority	Credits	Session
	ENG103 The Research Paper	PC	x	3	1
	ELJ103 Intermediate Japanese I	PC	x	3 (1/4)	1
	ELJ104 Japanese Literature in Translation	PC		3	1
	Chinese or Korean Course Option (see back)	PC		3 (1/4)	1
SEMESTER 4	Course	Category	Priority	Credits	Session
	LE1030 Humanities, Science & Technology (Capstone)	PC	x	3	1
	ELJ104 Intermediate Japanese II	PC	x	3 (1/4)	1
	Unrestricted Elective	PC		3	1
	Flexible Core Course Option	PC		3	1
Flexible Core Course Option	PC		3	1	

Register for GR1000 "Intent to Graduate" in CUNYfirst to apply for graduation in your final semester



Credits Required to Graduate

Pathways Required Core (PC) 12
 Pathways Flexible Core (FC) 18
 Program Core (PC) 30
Total 60

More information at degrees.laguardia.edu

Effective Fall 2018/Spring 2019 catalog. Updated: 7/23/23

Follow the map for the catalog year in which you first enroll.

Check Degree Audit & speak to an advisor for more support.

Pre/Co-requisites

Refer to the Pre- and Co-requisite list below to ensure you register for the appropriate courses.

Pre-requisite: A course which must be completed *prior* to taking another course.

Co-requisite: A course which must be taken during the same session as another course.

- ELJ301 PRE: CD: CIE 95/SL1 97 or Exemption
- ELJ302 PRE: ELJ101
- ENG103 PRE: ENG101
- ELJ303 PRE: ELJ102
- ELJ304 PRE: ENG103
- UR1000 PRE: ENG103&1018 & PYC: MAT107/115/117/119/120
- ELJ304 PRE: ELJ103

General Information

DEVELOPMENTAL COURSES Based on your incoming proficiency, you may require additional preparation before entering college-level English (ENGL001) or Math (MAT107,115,119,etc.). Options can include:

- Co-requisite courses such as ENA101, MAT117,119/123
- CUNY Start, Math Start, or CLIP
- English-as-a-Second-Language (ESL) courses
- Developmental courses such as ENA899 or MAT899
- First Year Institute Program (FYIP) Workshops

SESSIONS AND DATES Each semester, Fall and Spring, has two sessions, Session 1 (12-weeks) and Session 2 (9-weeks). It is recommended that you take 15 credits per semester for timely graduation. For questions regarding financial aid or tuition and fees, please speak with Student Financial Services in C-107 or e-mail EServices@laguardia.edu

CREDITS & HOURS Courses often meet for the same number of hours per week as academic credits awarded, but in some cases your classes meet for more hours, listed in the Credits column when applicable. Most degrees require 60 academic credits.

PRIORITY COURSES Priority Courses are important for your progress and should be taken in the suggested order.

PATHWAYS FLEXIBLE CORE You may choose Flexible Core courses based on interests or transfer goals. Speak to an advisor or view your Degree Audit to see a full list of options and/or requirements. Associate of Arts or Science degrees require you to take one course in each field: before, plus one additional course (18 credits). Associate in Applied Science degrees require you to take one course in three buckets (9+ credits).

- Creative Expression
 - Individual & Society
 - Scientific World
- U.S. Experience in its Diversity
 - World Cultures and Global Issues

ARMED SERVICES All students must complete an Urban Studies course to graduate. Urban Studies courses have an "U" at the end of the course code (example: HUM119U).

Other Program Notes

Chinese or Korean option – Select 1: ELJ301 Elementary Modern Chinese I or ELK301 Elementary Korean I (or other based on placement)

Humanities – Select 1: HUM101 Introduction to Art; HUM110 The Art of Eastern Asia; HUC106 Public Speaking; HUC130 The Art of Film; HUM102 Introduction to Music; HUM105 Art in New York; HUP101 Introduction to Philosophy; HUP104 Ethics and Moral Issues

Social Science – Select 1: SS1100 Introduction to Anthropology; SS1010 Introduction to Anthropology; SS1031 Cultural Anthropology; SS1105 International Economics; SS1120 World Geography; SS1102 World History from Ancient Times to 1500; SS1336 World History from 1500 to the Present; SS1200 Global Public; SS1010 Western Civilization from Ancient Times to the Renaissance; SS1010 Western Civilization from the Renaissance to Modern Times; SS1110 East Asia Civilization and Societies; SS1020 Afro-American History; SS1232 Survey of Latin American and Caribbean History; SS1230 Politics of Latin America and the Caribbean; SS1300 Introduction to Sociology

Education & Language Acquisition Department, LaGuardia Community College
 Email: ELAJ@laguardia.edu Location: 8-204 Phone: 718-652-5640

Japanese Option: Curriculum III

- DegreeAudit (<http://degreeworks.cuny.edu/>)

The screenshot shows the DegreeWorks Online Advisement System interface. At the top, there is a navigation bar with the CUNY logo and the DegreeWorks logo. Below the navigation bar, there are several tabs: CUNYfirst, FAFSA, Pathways, Schedule Builder, Class Schedule, Help/FAQ, Report an Issue, Print, and Log Out. The main content area contains a search form with fields for Student ID, Name, Degree, Major/Plan, Career Level, and Last Audit. Below the search form, there are buttons for Worksheets, Plans, Transfer What-If, Notes, Petitions, and GPA Calc. A red banner contains a welcome message and a reminder about FERPA regulations. Below the banner, there are sections for Student Accessible Features and Faculty Accessible Features, each with a list of features and their descriptions.

WELCOME TO DEGREWORKS, LA GUARDIA COMMUNITY COLLEGE'S DEGREE AUDIT SOFTWARE. CLICK ON THE HELP BUTTON FOR MORE INFORMATION, OR CLICK ON THE AUDIT BUTTON TO REVIEW STUDENT AUDITS.

REMINDER According to Federal FERPA regulations, no information regarding a student can be given out without the student's permission

Student Accessible Features

- Audit** | The Audit tab allows you to view the existing audit or run a new one for a student.
- What-If** | Use the What-If tab to run a What-If audit for an individual student.
- Planner** | Choosing the Planner tab will display the Student Academic Planner function keys. Clicking Printable View gives a planner that is printer-friendly. Clicking on Edit Planner allows you to modify the planner.

Faculty Accessible Features

- Find** | To search for a student using only part of the name, you must use the wildcard character '@' (e.g., to get a list that contains the student John Smith (displayed as Smith, John) , enter Smith@ for a last name search, or @John for a first name search; you may also try Smith@John@ for a better match).

copyright 1995 - 2016 Elucian Company L.P. and its affiliates.

Japanese Option: Transfer I

- Japanese Option has articulation agreements with the following 4-year institutions

Japanese Option: Articulation

- **Queens College**

- A traditional East Asian Studies major.
- Program website: <https://www.qc.cuny.edu/academics/cmalc/>
- Copy of the articulation: <https://bit.ly/LG-JP0TransQ>

- **Hunter College**

- Strong emphasis on Japanese language and culture
- Program website: <https://www.hunter.cuny.edu/classics/japanese>
- Copy of the articulation: <https://bit.ly/LG-JP0TransH>

- **Temple University Japan** (w/ International Studies Option)

- Finish your BA in Japan and obtain a degree from Temple University
- Program website: <https://www.tuj.ac.jp>
- Admissions information : <https://bit.ly/LG-JP0TransTUJb>

Japanese Option: Transfer II

- This information sheet has a lot of useful information for graduating/transferring students (<https://bit.ly/LG-JPOGrad>)



Liberal Arts
Japanese Option



Open this page from your phone



ASIAN JAPANESE OPTION

Liberal Arts Japanese Option (LA-JPO) offers an opportunity to learn the Japanese language and other related subjects such as Japanese Literature, Asian Art, East Asian History, Religion, and Social Psychology in Japan. The curriculum is designed to give your students the transfer to Bachelor's (B.A.) program in East Asian Studies and/or Japan Studies. Upon graduation, the Japanese Option at Lafayette Community College can transfer to the East Asian Studies Option at the Japanese Track at Otagiri College at the Japanese Language and Culture Institute (JLCCI) to pursue a Bachelor's degree in Japanese.

Some of our graduates apply for transfer to prestigious colleges and universities in East Asian Studies including USC, Temple University, Johns Hopkins, and Stanford University.

One of the Japanese Option is to include writing medium, interests and prior knowledge in Japan for professional careers. We will deal with Japanese language/culture as a serious academic subject and study materials beyond your existing interest in Japanese prior graduate and senior. There will be an interest in the Japanese Option should by acquiring some of the following elements to identify if this program fits your interests and future career plan.

FOR MORE INFORMATION

You can find more information about the Japanese Option at the following pages:

- <http://bit.ly/LG-JPOGrad>
- <http://www.lafayette.edu>

Why Study JPO? by the Japan From Japan <http://jpo.lafayette.edu>

• **Research** <https://www.researchgate.net/publication/304214404>

• **Visit** <http://www.visitjapan.go.jp>

• **History of Japan** <http://www.japan.go.jp>

• **The Rise of Modern Japan by Mark Ravitt** <http://www.markravitt.com>

• **Modern Japan: A Very Short Introduction** http://www.oxfordjournals.org/view_fulltext/doi/10.1093/acprof:oso/9780191089485.001.0001/1

• **Fun Facts** <http://www.funfacts.com>



Liberal Arts
Japanese Option



Open this page from your phone

ACADEMIC CURRICULUM

The academic curriculum is subject to change every academic year. Please refer to the College Catalog (<http://lafayette.edu/catalog>) for the most current information about the Japanese Option. The sample curriculum with the suggested course sequence is for informational purposes only. It is not intended to be a requirement for the Japanese Option. The sample curriculum with the suggested course sequence is for informational purposes only. It is not intended to be a requirement for the Japanese Option.

HOW TO CHANGE YOUR MAJOR

Students can change their major at the Registrar's Office (C-101) within the first three or four weeks of the semester. If you apply for a new major after the change of major deadline, the change will be effective only in the following semester. It is highly recommended to meet with the program director (see below) before submitting your Change of Major Form.

CONTACT

The program director of the Japanese Option (Toshiko Shindou) is Prof. Toshiko Shindou. He is usually available in office during the day and through (Japanese) e-mail. Prof. Shindou is contact Prof. Shindou if you have questions about the Japanese Option or the Japan Studies Program.

Toshiko Shindou, Ph.D.
Program Director of the LA Japanese Option
Room 310-PT
748 4th St SE
shindou@lafayette.edu

English Composition I (ENGL 100)	Japanese Business Papers (JBUS 100)
ENGL 100 Composition I (ENGL 100)	ENGL 100 Composition I (ENGL 100)
ENGL 100 Composition II (ENGL 100)	ENGL 100 Composition II (ENGL 100)
ENGL 100 Composition III (ENGL 100)	ENGL 100 Composition III (ENGL 100)
ENGL 100 Composition IV (ENGL 100)	ENGL 100 Composition IV (ENGL 100)
ENGL 100 Composition V (ENGL 100)	ENGL 100 Composition V (ENGL 100)
ENGL 100 Composition VI (ENGL 100)	ENGL 100 Composition VI (ENGL 100)
ENGL 100 Composition VII (ENGL 100)	ENGL 100 Composition VII (ENGL 100)
ENGL 100 Composition VIII (ENGL 100)	ENGL 100 Composition VIII (ENGL 100)
ENGL 100 Composition IX (ENGL 100)	ENGL 100 Composition IX (ENGL 100)
ENGL 100 Composition X (ENGL 100)	ENGL 100 Composition X (ENGL 100)
ENGL 100 Composition XI (ENGL 100)	ENGL 100 Composition XI (ENGL 100)
ENGL 100 Composition XII (ENGL 100)	ENGL 100 Composition XII (ENGL 100)
ENGL 100 Composition XIII (ENGL 100)	ENGL 100 Composition XIII (ENGL 100)
ENGL 100 Composition XIV (ENGL 100)	ENGL 100 Composition XIV (ENGL 100)
ENGL 100 Composition XV (ENGL 100)	ENGL 100 Composition XV (ENGL 100)
ENGL 100 Composition XVI (ENGL 100)	ENGL 100 Composition XVI (ENGL 100)
ENGL 100 Composition XVII (ENGL 100)	ENGL 100 Composition XVII (ENGL 100)
ENGL 100 Composition XVIII (ENGL 100)	ENGL 100 Composition XVIII (ENGL 100)
ENGL 100 Composition XIX (ENGL 100)	ENGL 100 Composition XIX (ENGL 100)
ENGL 100 Composition XX (ENGL 100)	ENGL 100 Composition XX (ENGL 100)
ENGL 100 Composition XXI (ENGL 100)	ENGL 100 Composition XXI (ENGL 100)
ENGL 100 Composition XXII (ENGL 100)	ENGL 100 Composition XXII (ENGL 100)
ENGL 100 Composition XXIII (ENGL 100)	ENGL 100 Composition XXIII (ENGL 100)
ENGL 100 Composition XXIV (ENGL 100)	ENGL 100 Composition XXIV (ENGL 100)
ENGL 100 Composition XXV (ENGL 100)	ENGL 100 Composition XXV (ENGL 100)
ENGL 100 Composition XXVI (ENGL 100)	ENGL 100 Composition XXVI (ENGL 100)
ENGL 100 Composition XXVII (ENGL 100)	ENGL 100 Composition XXVII (ENGL 100)
ENGL 100 Composition XXVIII (ENGL 100)	ENGL 100 Composition XXVIII (ENGL 100)
ENGL 100 Composition XXIX (ENGL 100)	ENGL 100 Composition XXIX (ENGL 100)
ENGL 100 Composition XXX (ENGL 100)	ENGL 100 Composition XXX (ENGL 100)

Japanese Option: Goals and Student Support I

Mission Statement of the Japanese Option

The Liberal Arts Japanese Option (AA degree) offers an opportunity to learn the Japanese language and other related subjects such as Japanese Literature, Asian Art, East Asian History, Religions and Social Psychology in Asia and to acquire an associate's degree in Japanese. The curriculum is designed to prepare students for transfer to baccalaureate (4-year) programs in East Asian Studies and/or Japan Studies. [...] The goal of the Japanese Option is to develop students' interests and prior knowledge in Japan for professional careers. We will deal with Japanese language/culture as a serious academic subject (beyond casual interest in Japanese pop culture and anime).

Japanese Option: Goals and Student Support II

General Support Offices

- **College Catalog**
 - <http://www.lagcc.cuny.edu/academics/catalog/>
- **Education and Language Acquisition (ELA) Department** (B-234)
 - The LA Japanese Option is housed in the ELA Department. An advisor or program director will be available to talk about the option with you.
 - <http://www.laguardia.edu/ela/>
- **Academic Advisors** (B-100)
 - A few academic advisors are designated to the Japanese Option students. See the advisement website at <https://www.laguardia.edu/Academics/Majors/Japanese/> or MyLaGuardia <https://mail.lagcc.cuny.edu/viplogin/Default.aspx>.

Japanese Option: Goals and Student Support III

Academic Support

- **Modern Language Lab** (B-206)
 - Free language tutoring
 - <https://www.laguardia.edu/ela/ml-lab-and-placement/>
- **Japan and Entertainment Club**
 - Meetings during the club hours (Wed 2:15pm-4:25pm)
 - <https://t-nagano.com/projects/JapanClub/>
- **Peer Advisors**
 - Senior students are available as mentors for newer students
 - <https://www.laguardia.edu/peeradvisors/>
- **Co-curricular events by the Japan Studies Program**
 - <https://t-nagano.com/projects/JapaneseProgram/>
 - <https://chrysanthemum.common.gc.cuny.edu>




Japanese Option: Goals and Student Support IV

Tips for Success

1. Plan smaller goals that lead to a major objective of your academic plan.
2. Have a long-term goal (i.e., where are you in one, five, and ten years?)
3. Plan your week, month, and year
4. Don't be shy. Ask questions to your advisor and faculty mentor.
5. Connect with other students in the Japanese Option.
6. Attend co-curricular events (such as the Japan & Entertainment Club)

Find More Information I

Contact Information for Japanese Option

-  Japanese Option **Blog**
 - <https://chrysanthemum.commons.gc.cuny.edu>
-  Japan Studies **Discord**
 - <https://discord.gg/hM37Zdt89>
-  Japanese Option **Reddit**
 - <https://www.reddit.com/r/lagJapaneseOption/>


Find More Information II


- **Contact**


Tomonori Nagano, Ph.D.
Program Director of the Japanese Option
LaGuardia Community College
31-10 Thomson Avenue (B-234FF)
Long Island City, NY 11101

 <https://t-nagano.com>

 tnagano@lagcc.cuny.edu

 718-482-5484

 B-234FF

 Nagano-sensei#9320